



ABL 3000

HEAVY-DUTY MECHANICAL
ELEVATOR SWEEPING MACHINE





THE SWEDISH-BUILT SWEEPER WITH HIGH PERFORMANCE

Handles sand, gravel and debris without problems!
Perfect for cleaning bicycle and walking path, roads in cities and communities. Also industrial and harbor areas.

» PERFORMANCE

- + Maximum sweeping performance
- + Sweep width 2300-3000 mm
- + 3,35 cubic meter garbage container
- + Side tip garbage container
- + Wide elevator
- + Elevator raise/lower during operation
- + Water tank 1150 litres
- + SKF central lubrication
- + High pressure washer 15 m hose reel
- + Service friendly
- + Low noise level
- + Environmentally friendly hydraulic system

» QUALITY

- + Swedish built machines
- + Chassis, sheet metal details, painting are all manufactured in our own factory
- + CE Approved
- + Eurotest Passed

» FLEXIBILITY

- + Frame control right/left lateral movement
- + Side tip of garbage container
- + Service hatches allow servicing to be carried out easily
- + Easy to clean
- + Module built up



ABL 3000 meets the highest level with four stars according to PM2.5/PM10 certification.

ABL 3000

EASY TO OPERATE
EASY TO MAINTAIN
BUILT TO LAST



MADE IN SWEDEN



3000



NEW COMPACT SWEDISH
QUALITY DESIGN



EASY TO OPERATE
EASY TO MAINTAIN
BUILT TO LAST

+ BENEFITS OF ABL 3000

- + Work fast, efficiently between the workplaces
- + Wheel axle with leaf suspension
- + Hydraulic or pneumatic brake
- + Frame control right/left lateral movement
- + Adjustable sweep width right/left brush
- + Side angle right/left brush
- + Brush pressure floating/hydraulic adjustable
- + Elevator raise/lower during operation
- + Side tip of garbage container
- + Central lubrication
- + Pressure washer
- + Display with touch screen
- + Outstanding sweeping performance
- + Low maintenance cost
- + Service hatches
- + Easy to clean
- + Modular design
- + Low noise level
- + Environmentally friendly hydraulic system



TECHNICAL SPECIFICATION

Chassis	Built by steel profiles
Service weight	Ca.2900 kg
Total weight	Ca 7500 kg
Wheel axle	8-ton with leaf spring
Wheel	235/75 R17.5
Rim	17,5"
Pressure	675 kpa
Brake system	Drum brake pneumatic or hydraulic
Support legs	Hydraulic adjustable in height
Towing eye	Adjustable in height
Drawbar	Rotatable right/left lateral movement
Rec. power tractor	Pump mounted on PTO (540 rpm) 48 kw (65 hp)
Rec. effect gear carrier	60 l/min 48 KW (65hk)
Hydraulic pump flow	60 l/min max pressure 200 Bar
Hydraulic motors	Orbit motors
Hydraulic valves	Proportional/on/off
Hydraulic filter	Pressure filter
Oil cooler	Heat exchanger
Hydraulic tank	110 liters
Water tank	2 x 575 liters
Water level	Visually in display
Water pump	2 electric 12 v membrane pump
Water pressure	3,5 Bar
Water Capacity	32 litres/min
Water nozzles	8 pcs
Pressure Washer	15 m hose reel 160 bar

Sweep width	2300-3000 mm
Centre brush diameter	750 mm
Centre brush length	1050 mm
Brush diameter	1300 mm
Brush material	Plastic/steel
Centre brush shaft	Steel
Brush pressure	Floating/ hydraulic adjustable
Elevator belt	3 pcs
Elevator rakes	11 pcs
Elevator Width	1050 mm
Elevator hatch	1 pcs
Elevator warning when blocked	Visually in display
Garbage container volume	3,35 cubic
Emptying garbage containers	Side tip
Emptying height	2000 mm
Signal when emptying container	Acoustic signal
Hatch on garbage tank	Trash, bottles
Transport speed	40 km/h 50 km/h 80 km/h
Sweep speed	1-20 km/h
Remote box	Touch screen display
Working light	2 pcs
Rotation light	1 pcs
Signal horn	Acoustic signal
SKF Central Lubrication	Automatic Lubrication

WITH ABL SWEEP CONTROL SWEEPING BECOMES A PLEASURE

ABL Sweep Control, has been developed based on a clear goal. We want to make it easier for the driver to work.



+ FOUR STRONG ADVANTAGES OF ABL SWEEP CONTROL

- 1 Simplicity**
 Functions are controlled with an display, this make handling easy. The driver receives continuous feedback from machine during his work session.
- 2 Flexibility**
 System handles all sweeper functions and applications.
- 3 Modern interface**
 Stylish and logically constructed control panel shows simple function and selected setting values.
- 4 Reliable**
 The system is robust and tested to manage tough working environments, and tough climates.





» STANDARD

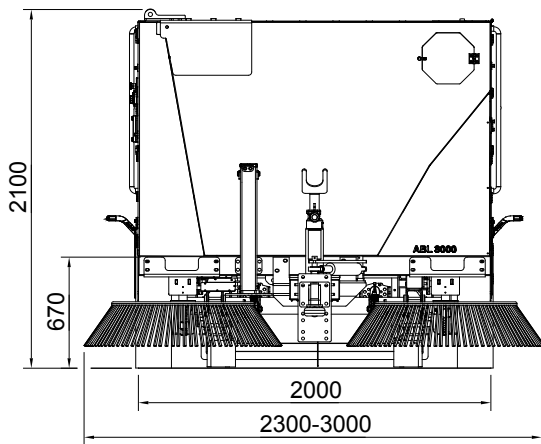
- » Wheel axle with leaf spring
- » Brake system pneumatic or hydraulic
- » Support leg Hydraulic
- » Brush pressure floating and hydraulic adjustable
- » Side angle right/left brush
- » Sweep width adjustable side brushes
- » Elevators raise/lower during operation
- » Water pump
- » Water level water tank visual in display
- » Water bars left/right side brush
- » Water bar centre brush
- » High pressure washing 15 m hose reel
- » SKF Central lubrication
- » Touch screen display
- » Working lights
- » Rotation light
- » Signal horn



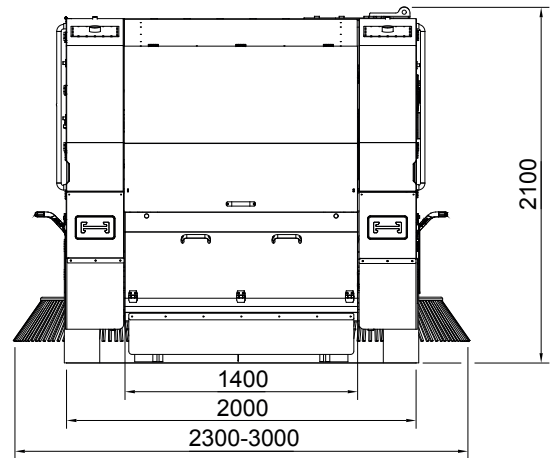
+ OPTION

- + Side angle right/left brush electric actuator
- + Sweep width adjustable side brush electric actuator
- + Rear view camera

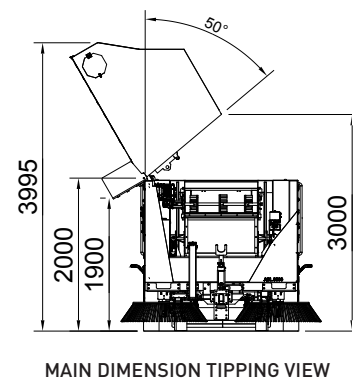
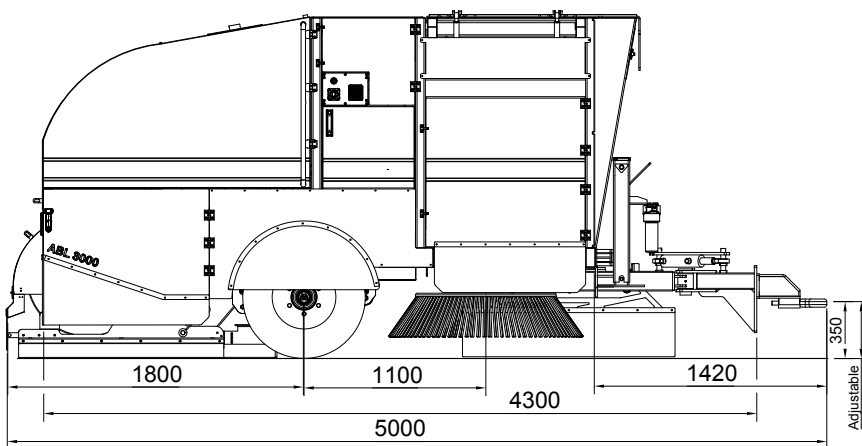
MAIN DIMENSION FRONT VIEW



MAIN DIMENSION REAR VIEW

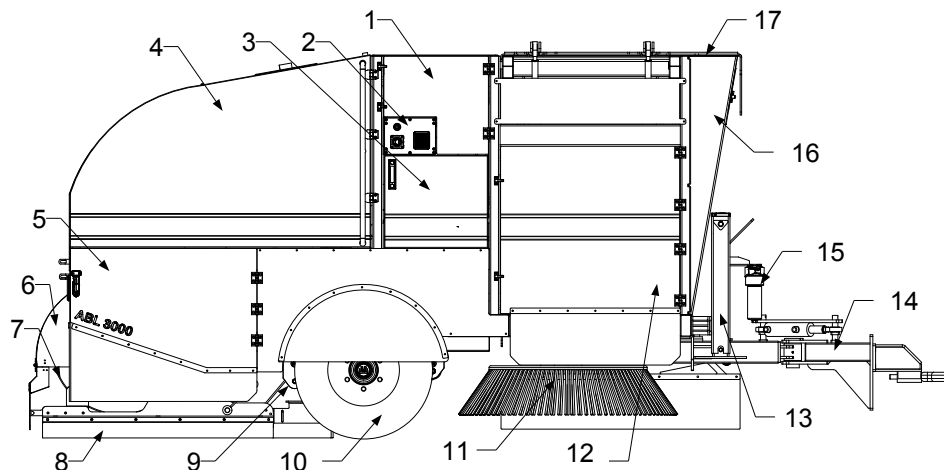


MAIN DIMENSION SIDE VIEW



MAIN DIMENSION COMPONENTS

1. Hydraulic valves
2. Electrical box
3. Hydraulic tank
4. Water tank
5. Side protection
6. Brush guard
7. Centre brush
8. Collector shoes
9. Elevator
10. Wheel axle
11. Side brush
12. Side door
13. Support leg
14. Draw bar
15. Pressure filter
16. Garbage container
17. Tipper hatch





ABL CONSTRUCTION EQUIPMENT AB
SVETSAREGATAN 1
576 33 SÄVSJÖ

MOBILE +46(0)38 267 600

E-MAIL info@ablsweeper.com

WEB www.ablsweeper.com

